



INTERMEDIATE

#### [yarnspirations.com/abbreviations](http://yarnspirations.com/abbreviations)

**Alt** = Alternate(ing)

**Beg** = Begin(ning)

**C4B** = Slip next 2 stitches onto a cable needle and leave at back of work. K2, then K2 from cable needle.

**C4F** = Slip next 2 stitches onto a cable needle and leave at front of work. K2, then K2 from cable needle.

**Cont** = Continue(ity)

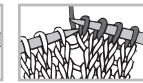
**Dec** = Decrease(ing)

**Inc** = Increase 1 stitch by knitting into front and back of next stitch.

**K** = Knit

**K2tog** = Knit next 2 stitches together.

**M1** = Make 1 stitch by picking up horizontal loop lying before next stitch and knitting into back of loop.



**P** = Purl

**Pat** = Pattern

**Psso** = Pass slipped stitch over

**Rem** = Remain(ing)

**Rep** = Repeat

**RS** = Right side

**Sl1** = Slip next stitch knitwise.

**St(s)** = Stitch(es)

**T3L** = Slip next 2 stitches onto a cable needle and leave at front of work. P1, then K2 from cable needle.

**T3R** = Slip next stitch onto a cable needle and leave at back of work. K2, then P1 from cable needle.

**T4L** = Slip next 2 stitches onto a cable needle and leave at front of work. P2, then K2 from cable needle.

**T4R** = Slip next 2 stitches onto a cable needle and leave at back of work. K2, then P2 from cable needle.

**WS** = Wrong side.

#### SIZES

##### To fit bust measurement

<b>XS/S</b>	<b>28-34" [71-86.5 cm]</b>
<b>M</b>	<b>36-38" [91.5-96.5 cm]</b>
<b>L</b>	<b>40-42" [101.5-106.5 cm]</b>
<b>XL</b>	<b>44-46" [112-117 cm]</b>
<b>2/3XL</b>	<b>48-54" [122-137 cm]</b>
<b>4/5XL</b>	<b>52-62" [142-157.5 cm]</b>

##### Finished bust

<b>XS/S</b>	<b>36½"</b>	<b>[92.5 cm]</b>
<b>M</b>	<b>40½"</b>	<b>[103 cm]</b>
<b>L</b>	<b>44"</b>	<b>[112 cm]</b>
<b>XL</b>	<b>48"</b>	<b>[122 cm]</b>
<b>2/3XL</b>	<b>57½"</b>	<b>[146 cm]</b>
<b>4/5XL</b>	<b>65"</b>	<b>[165 cm]</b>

#### GAUGE

17 sts and 24 rows = 4" [10 cm]  
with larger needles in stocking st.

#### MATERIALS

**Caron® Simply Soft® Tweeds™** (5 oz/141 g; 250 yds/228 m)  
Off White Tweeds (23001)

<b>Size</b>	<b>XS/S</b>	<b>M</b>	<b>L</b>	<b>XL</b>	<b>2/3XL</b>	<b>4/5XL</b>	
	<b>3</b>	<b>4</b>	<b>4</b>	<b>4</b>	<b>4</b>	<b>5</b>	<b>balls</b>

Sizes U.S. 8 (5 mm) and U.S. 9 (5.5 mm) knitting needles **or size needed to obtain gauge**. Cable needle. 3 st holders. Separating zipper.

**INSTRUCTIONS**

The instructions are written for smallest size. If changes are necessary for larger sizes the instructions will be written thus ( ). When only one number is given, it applies to all sizes. For ease in working, circle all numbers pertaining to your size.

**Panel Pat** (worked over 20 sts) (see chart on page 4).

**1st row:** (RS). (P4. C4B) twice. P4.

**2nd and alt rows:** Knit all knit sts and purl all purl sts as they appear.

**3rd row:** P2. T4R. T4L. T4R. T3L. P3.

**5th row:** P2. K2. P4. C4F. P3. T3L. P2.

**7th row:** P2. T4L. T4R. T4L. P2. K2. P2.

**9th row:** P4. C4B. P4. (K2. P2) twice.

**11th row:** P2. T4R. T4L. T4R. P2. K2. P2.

**13th row:** P2. K2. P4. C4F. P3. T3R. P2.

**15th row:** P2. T4L. T4R. T4L. T3R. P3.

**17th row:** As 1st row.

**19th row:** P3. T3R. T4L. T4R. T4L. P2.

**21st row:** P2. T3R. P3. C4F. P4. K2. P2.

**23rd row:** P2. K2. P2. T4R. T4L. T4R. P2.

**25th row:** (P2. K2) twice. P4. C4B. P4.

**27th row:** P2. K2. P2. T4L. T4R. T4L. P2.

**29th row:** P2. T3L. P3. C4F. P4. K2. P2.

**31st row:** P3. T3L. T4R. T4L. T4R. P2.

**32nd row:** As 2nd row. These 32 rows form Panel Pat.

**BACK**

With smaller needles, cast on **78 (86-94-102-122-138)** sts.

**1st row:** (RS). K2. \*P2. K2. Rep from \* to end of row.

**2nd row:** P2. \*K2. P2. Rep from \* to end of row.

Rep last 2 rows of (K2. P2) ribbing until work from beg measures 6" [15 cm], ending with a WS row.

Change to larger needles and beg with a knit row, cont even in stocking st until work from beg measures 13" [33 cm], ending with a purl row.

**Shape armholes:** Cast off **6 (7-8-10-15-18)** sts beg next 2 rows. **66 (72-78-82-92-102)** sts.

**Sizes 2/3XL and 4/5XL only:** Dec 1 st at each end of next (**6-8**) rows. (**80-86**) sts.

**All sizes:** Dec 1 st each end of next and every following alt row **4 (5-6-7-5-7)** times. **56 (60-64-66-68-70)** sts. Cont even until armholes measure **7¾ (8-8½-9-10-10½)" [19.5 (20.5-21.5-23-25.5-26.5) cm]**, ending with a purl row.

**Shape shoulders:** Cast off **6 (7-7-8-8-8)** sts beg next 2 rows, then **5 (6-7-7-7-8)** sts beg following 2 rows. Leave rem **34 (34-36-36-38-38)** sts on a st holder.

**LEFT FRONT**

With smaller needles, cast on **48 (52-56-60-72-80)** sts.

**1st row:** (RS). (K2. P2) **6 (7-8-9-12-14)** times. K2. Work 1st row of Panel Pat. K2.

**2nd row:** K2. Work 2nd row of Panel Pat. (P2. K2) **6 (7-8-9-12-14)** times. P2.

Panel Pat, garter st edging and ribbing are now in position.

Keeping cont of pat, cont in (K2. P2) ribbing until work from beg measures 6" [15 cm], ending with a WS row.

Change to larger needles.

**Sizes L and XL only: Next row:** K11. Inc 1 st in next st. K13. Inc 1 st in next st. K(**8-12**). Pat to end of row. (**58-62**) sts.

**Next row:** Pat across next 22 sts. Purl to end of row.

**All sizes:** Keeping cont of Panel Pat and garter st edging, proceed in stocking st until work from beg measures 13" [33 cm], ending with a WS row.

**Note:** Measure length of work over stocking st.

**Shape armhole:** Keeping cont of pat, cast off **6 (7-8-10-15-18)** sts beg next row. **42 (45-50-52-57-62)** sts. Work 1 row even.

**Sizes 2/3XL and 4/5XL only:** Dec 1 st at armhole edge on next (**6-8**) rows. (**51-54**) sts.

**All sizes:** Dec 1 st at beg of next and every following alt row **4 (5-6-7-5-7)** times more. **37 (39-43-44-45-46)** sts.

Cont even in pat until armhole measures same length as Back to beg of shoulder shaping, ending with a WS row.



**Shape shoulder:** Cast off **6** (7-7-8-8-8) sts beg next row, then **5** (6-7-7-7-8) sts beg following alt row. Work 1 row even. Leave rem **26** (26-29-29-30-30) sts on a st holder.

### RIGHT FRONT

With smaller needles, cast on **48** (52-56-60-72-80) sts.

**1st row:** (RS). K2. Work 17th row of Panel Pat. (K2. P2) **6** (7-8-9-12-14) times. K2.

**2nd row:** (P2. K2) **6** (7-8-9-12-14) times. P2. Work 18th row of Panel Pat. K2.

Panel Pat, garter st edging and ribbing are now in position.

Keeping cont of pat, proceed in (K2. P2) ribbing until work from beg measures 6" [15 cm], ending with a WS row.

Change to larger needles.

**Sizes L and XL only: Next row:** Pat across 22 sts. K(9-13). Inc 1 st in next st. K13. Inc 1 st in next st. Knit to end of row. (58-62) sts.

**Next row:** Purl to last 22 sts. Pat to end of row.

**All sizes:** Keeping cont of Panel Pat and garter st edging, cont in stocking st until work from beg measures 13" [33 cm], ending with a RS row.

**Shape armhole:** Keeping cont of pat, cast off **6** (7-8-10-15-18) sts beg next row. **42** (45-50-52-57-62) sts.

**Sizes 2/3XL and 4/5XL only:** Dec 1 st at armhole edge on next (6-8) rows. (51-54) sts.

**All sizes:** Dec 1 st at end of next and every following alt row **4** (5-6-7-5-7) times more. **37** (39-43-44-45-46) sts.

Cont even in pat until armhole measures same length as Back to beg of shoulder shaping, ending with a RS row.

**Shape shoulder:** Cast off **6** (7-7-8-8-8) sts beg next row, then **5** (6-7-7-7-8) sts beg following alt row. Leave rem **26** (26-29-29-30-30) sts on a st holder.

### SLEEVES

With smaller needles, cast on **42** (42-42-46-46-46) sts.

**1st row:** (RS). K2. \*P2. K2. Rep from \* to end of row.

**2nd row:** P2. \*K2. P2. Rep from \* to end of row.

Rep last 2 rows of (K2. P2) ribbing until work from beg measures 7" [18 cm], ending with a WS row.

Change to larger needles and proceed in stocking st, inc 1 st each end of 5th and every following **8th** (8th-6th-6th-4th-2nd) row **2** (5-5-6-9-2) times, then every following **10th** (10th-8th-8th-6th-4th) row **5** (3-5-4-5-15) times. **58** (60-64-68-76-82) sts.

Cont even until work from beg measures **21** (21½-21½-21-20½-20)" [53.5 (54.5-54.5-53.5-52-51) cm], ending with a purl row.

**Shape top:** Cast off **5** (5-6-8-11-13) sts beg next 2 rows. **48** (50-52-52-54-56) sts. Dec 1 st each end of needle on next and every following alt row **12** (13-14-16-19-20) times, then every row **7** (7-7-5-3-3) times. Cast off rem 8 sts.

### FINISHING

Pin garment pieces to measurements. Cover with a damp cloth, leaving cloth to dry.

**Hood:** Sew shoulder seams. With RS of work facing and larger needles, pat across **26** (26-29-29-30-30) sts from Right Front st holder. Place marker on needle. K**34** (34-36-36-38-38) from back st holder. Pat across **26** (26-29-29-30-30) sts from Left Front st holder. **86** (86-94-94-98-98) sts.

Work 1 row even in pat.

**Next row:** (RS). Pat to marker. M1. K**34** (34-36-36-38-38). M1. Pat to end of row.

**Next row:** Work even in pat.

Rep last 2 rows **9** (9-5-5-3-3) times more. 106 sts.

Cont even in pat until Hood measures 12" [30.5 cm], ending with a WS row.

**Shape top: 1st row:** Pat across 51 sts. Sl1. K1. pss0. Place marker on needle. K2tog. Pat to end of row.

**2nd row:** Work even in pat.

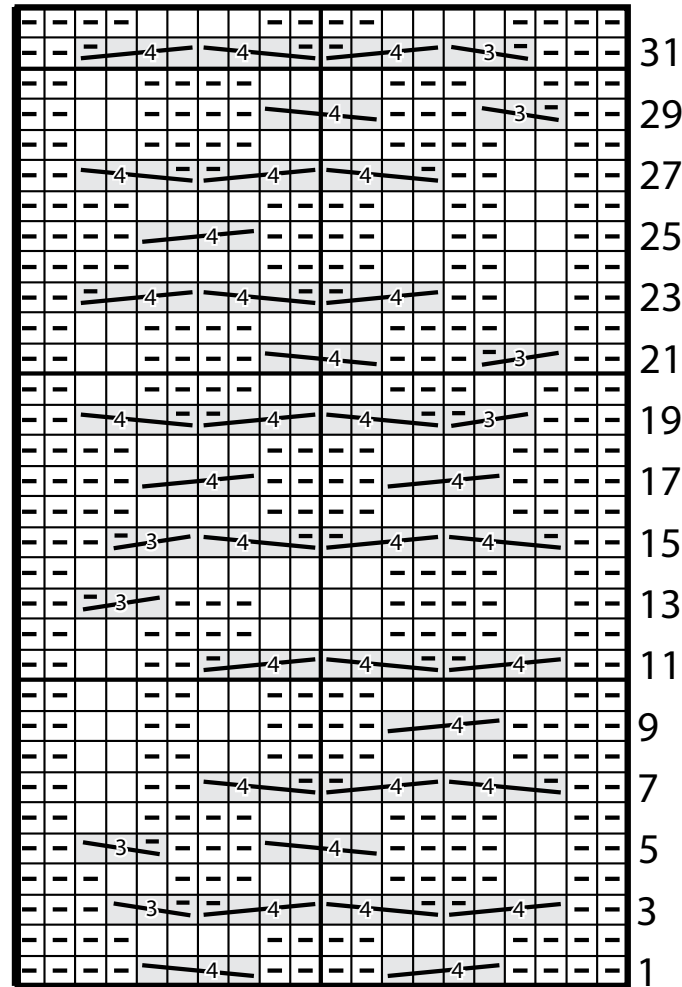
**3rd row:** Pat to 2 sts before marker. Sl1. K1. pss0. K2tog. Pat to end of row.

Rep 2nd and 3rd rows 7 times more,  
then 2nd row once.  
Cast off rem 88 sts.

Fold cast off edge of Hood in  
half and sew top seam. Sew in  
Sleeves. Sew side and sleeve seams,  
reversing seam for last 4" [10 cm]  
for cuff turn back. Sew in zipper.





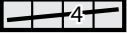
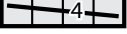
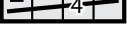



### Panel Pat



Start Here

### Key

-  = Knit on RS rows. Purl on WS rows.
-  = Purl on RS rows. Knit on WS rows.
-  = T3R
-  = T3L
-  = C4B
-  = C4F
-  = T4R
-  = T4L

